

# ICARO MA

ICARO MA P925180 00006



Incorporated control board: LEO MA

- **Maximum performance** and continuous service offered by Icaro MA irreversible gearmotor.
- **Design and convenience:** major aesthetic innovation and greater casing sturdiness.
- **Safe release manoeuvre made simple** by means of the new ergonomic knob.
- **Maximum safety with anti-squash protection**, thanks to a microprocessor which guarantees innovative torque control and inverts the direction in case of obstacles in opening and closing.
- **Improved accessibility and management of the control panel**, having the control board fitted to the front and a display for programming.
- **Diagnostic and statistical functions** through the display.
- **Control board** preset for management by means of the UNIPRO universal programmer.
- **Built in 64 codes rolling code** receiver.
- **Parameter autose**t option for braking, torque and anti-squash functions.
- **Version with inductive limit switch** available.
- **Available in the inductive limit switch version** (by using the FCM KIT)

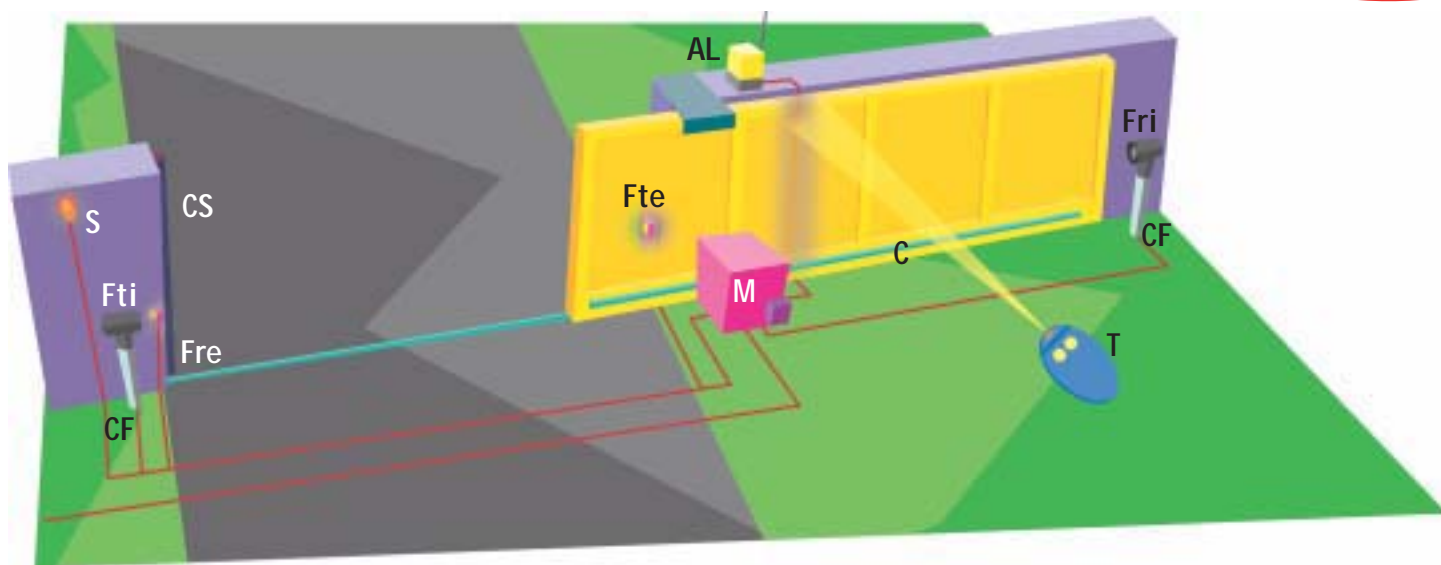


## Operator

## ICARO MA

	230 V $\pm$ 10%, 60 Hz single-phase
Absorbed power	750 W
Thermal protection	integrated
Max. leaf weight	20000 N (~2000 kg)
Output revolutions	37 min <sup>-1</sup>
Pinion pitch	4 mm (18 teeth)
Leaf speed	9 m/min
Impact reaction	electronic clutch with encoder
Manual manoeuvre	mechanical knob release with personalised key
N° manoeuvres in 24 hours	continuous service
Control panel	LEO MA
Type of limit switch	electromechanical or inductive
Environmental conditions	from -15°C to +60°C
Degree of protection	IP24
Operator weight	250 N (~25 kg)
Dimensions	see drawing

# Automation for rack sliding gates weighing up to 2000 kg, apartment-block and industrial use

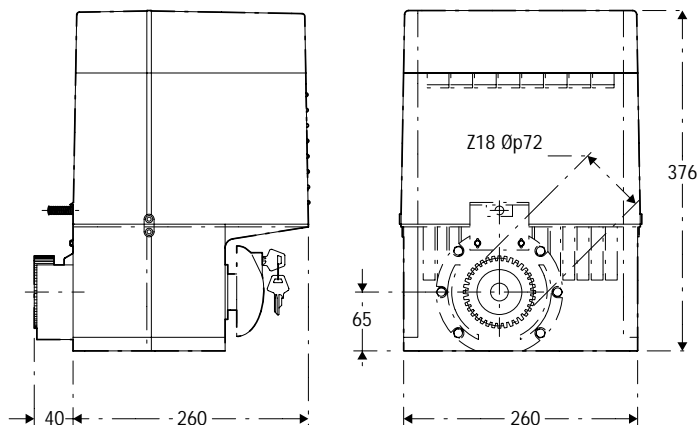


## Example of installation

M gearmotor ICARO MA with built-in control board LEO MA and incorporated 64 rolling code receiver  
 T double-channel rolling code transmitter, Mitto 2 12V  
 Fte-Fre Pair of photocells, Cellula 130  
 Fti-Fri Pair of photocells Cellula 50  
 CF Pair of photocell posts, CC50  
 AL blinker with antenna  
 S key selector, Intro  
 C galvanised iron rack, CFZ  
 CS safety edge

• For system layout and installation conditions, refer to the standards and laws in force in the country of installation.

## Dimensions



## Main characteristics

Irreversible type electromechanical operator for the automation of sliding gates for apartment-block and industrial use • ICARO MA is provided with a self-calibration system • electronic torque limiter antisquash function with encoder • setting with display • integrated rolling-code receiver • self-diagnosis function and centralised command option • LEO control board • Main specifications: supply 230 V ± 10% 50Hz • power 750W • leaf speed 9m/min • max leaf weight 20000N (~2000 kg).

Contact:

Randa Trading & Contracting Co. Ltd.

Tel: 474 8881 / Fax: 477 7827.

